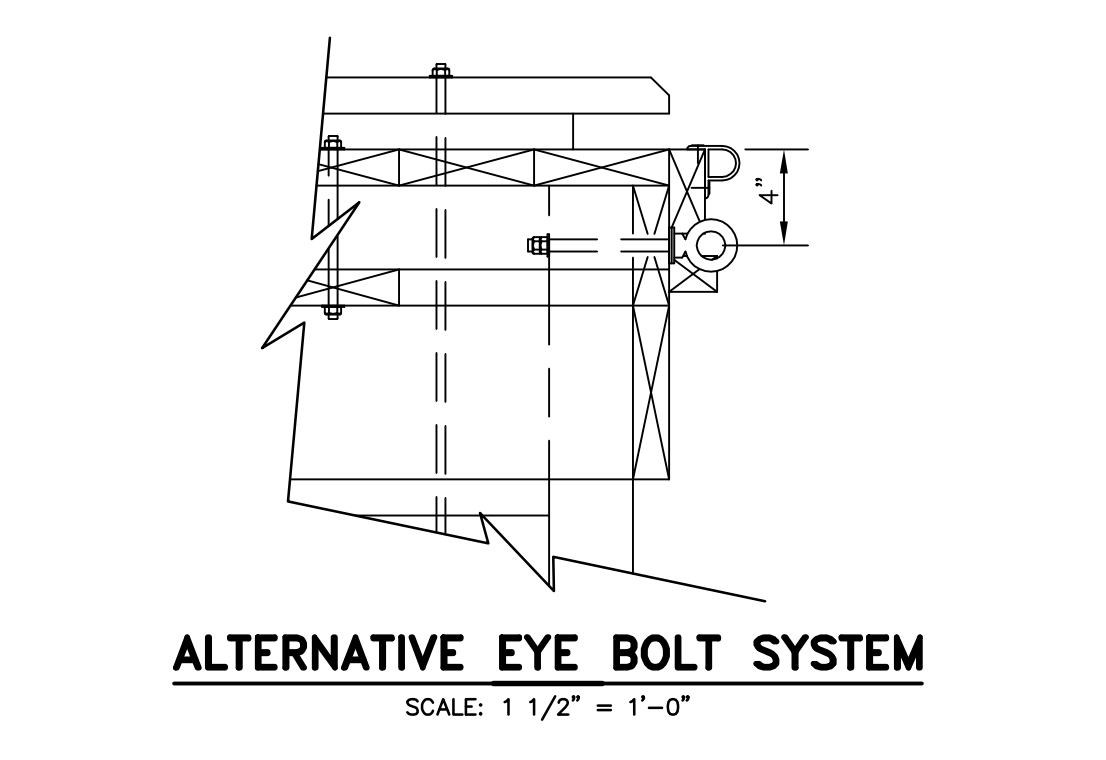
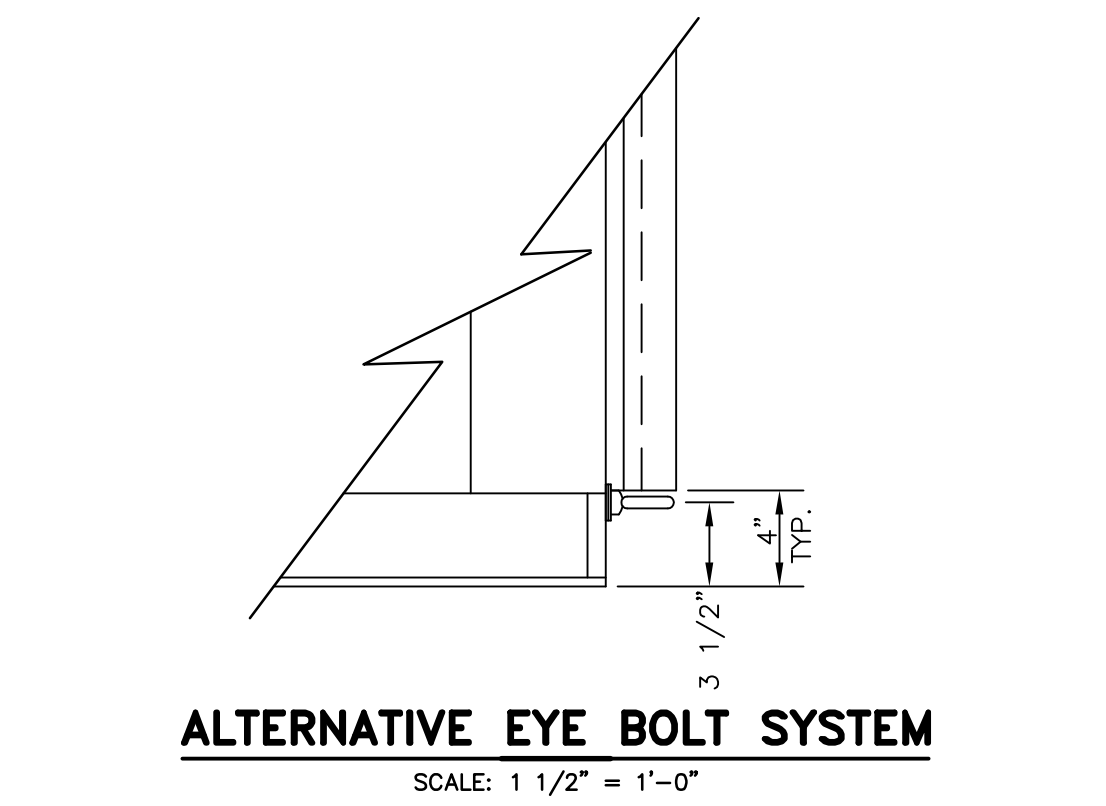
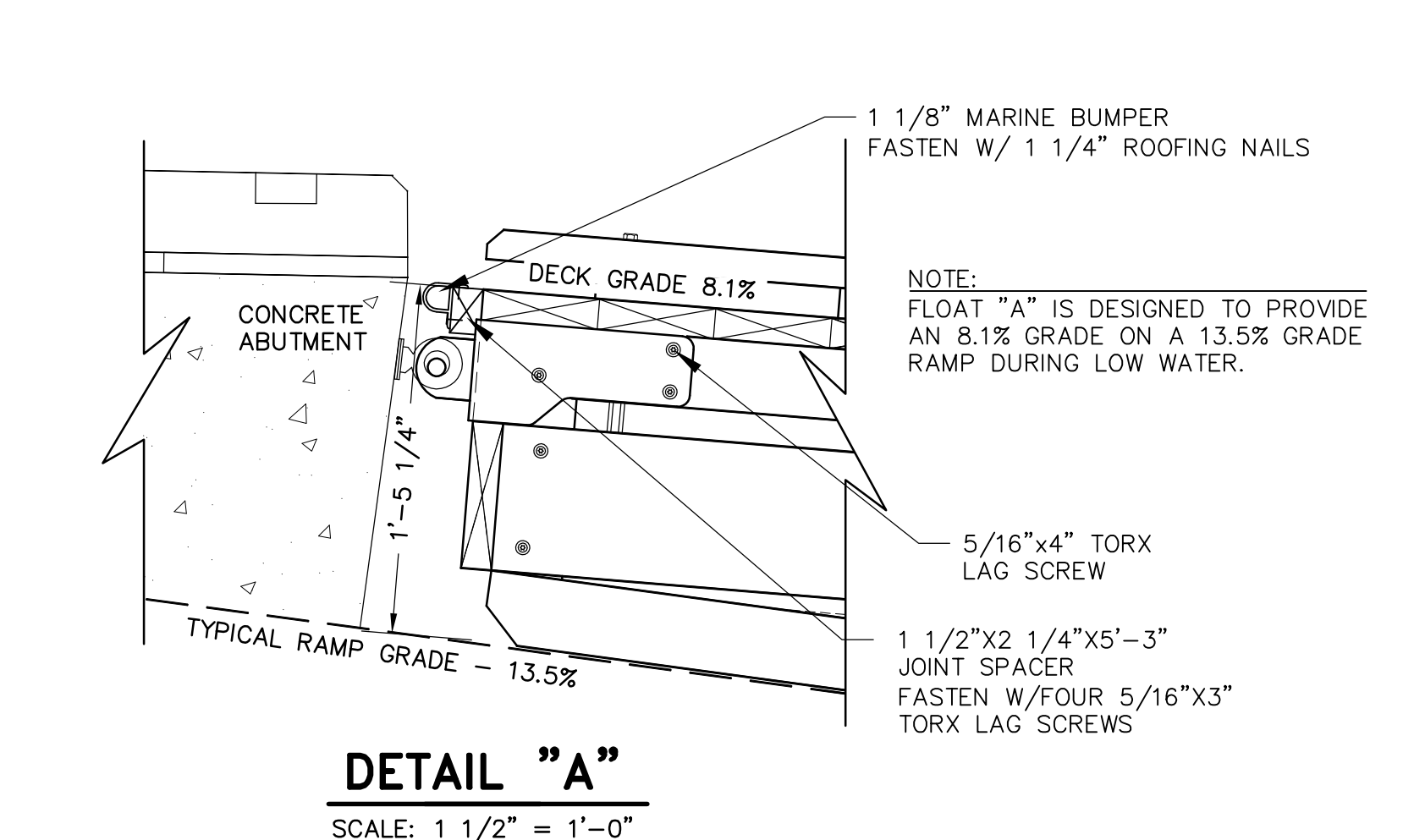
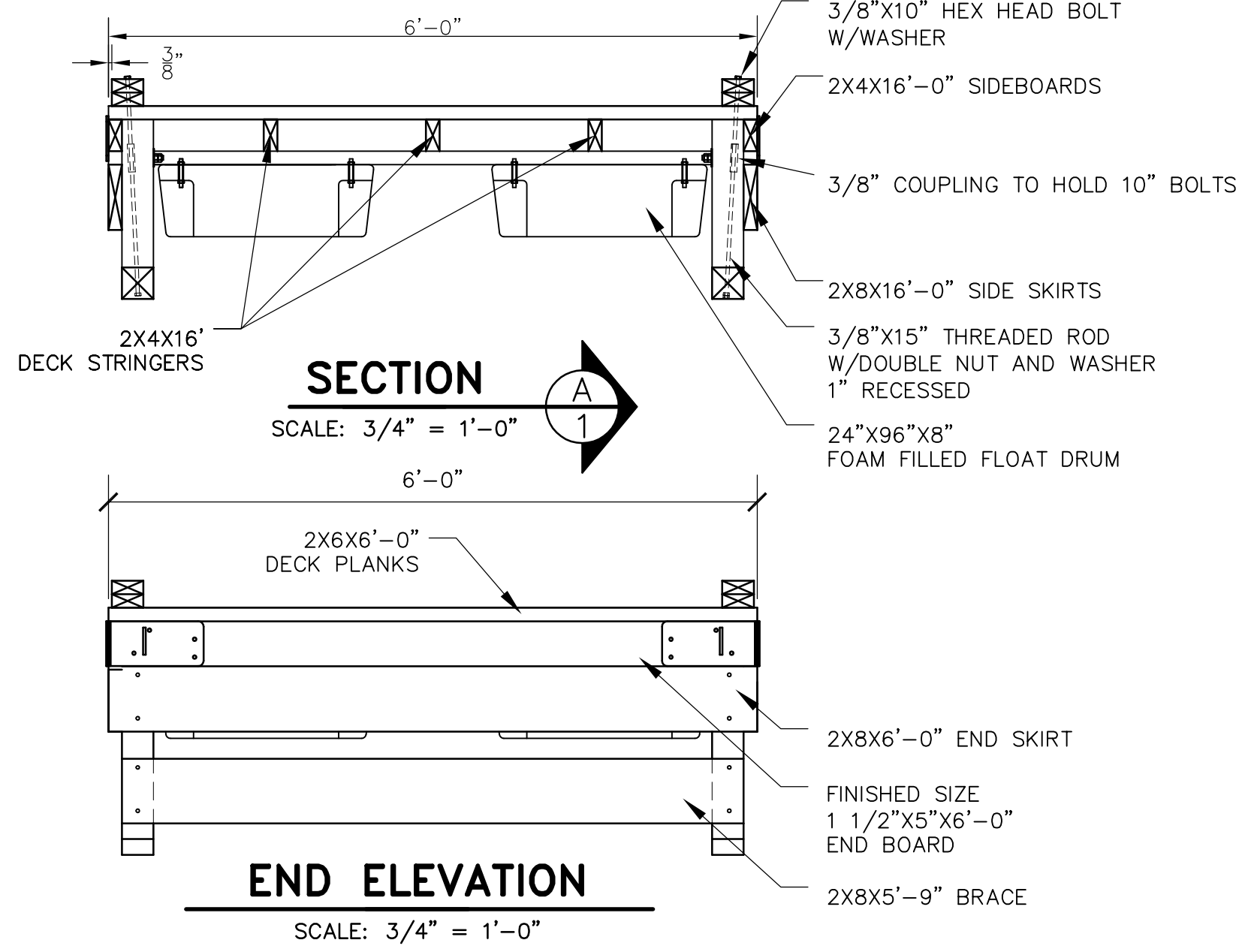
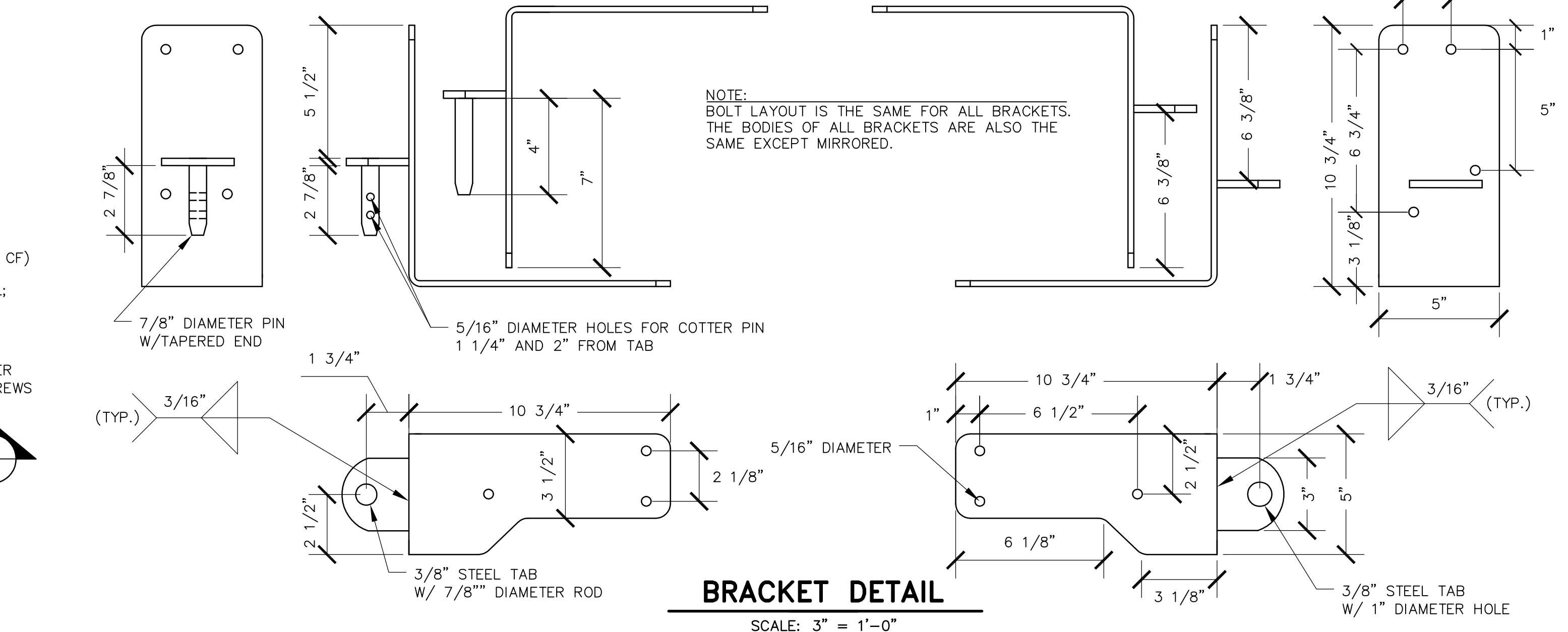
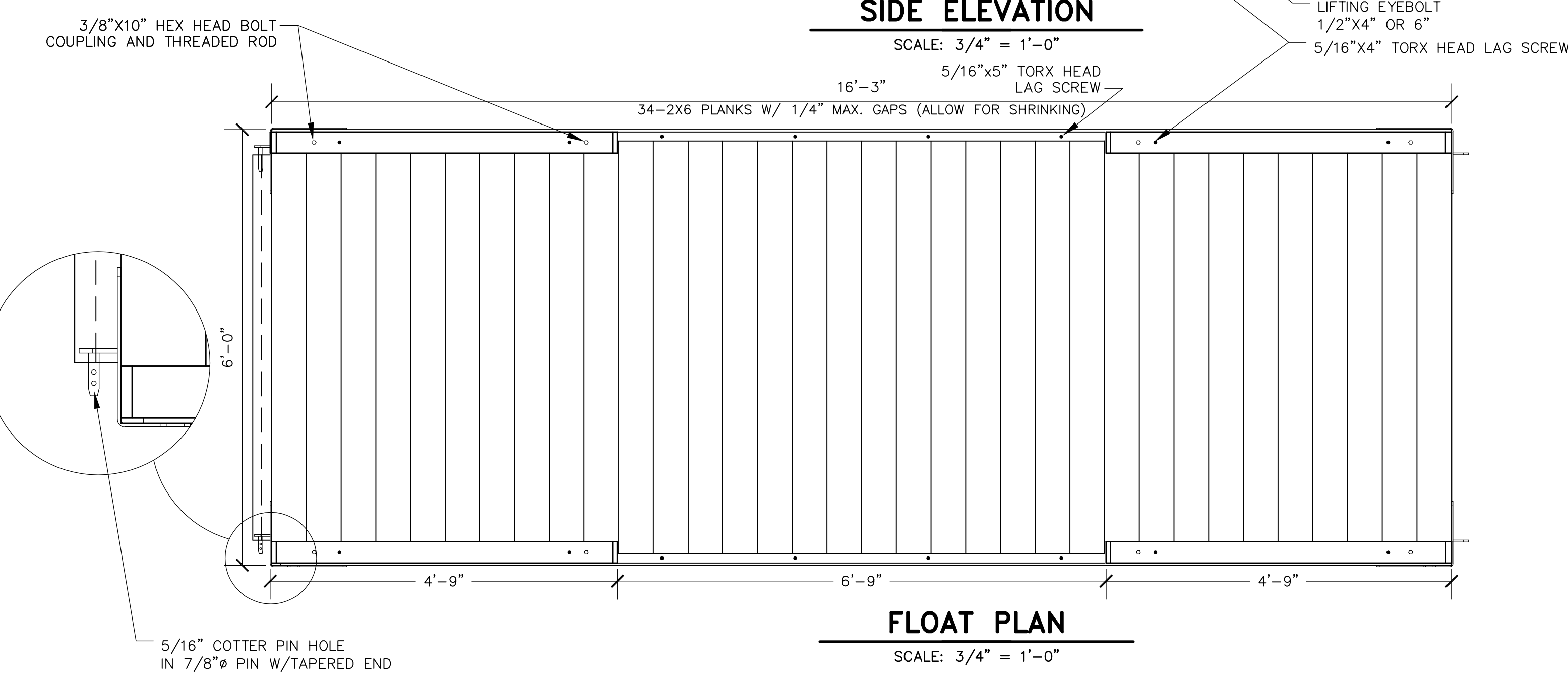
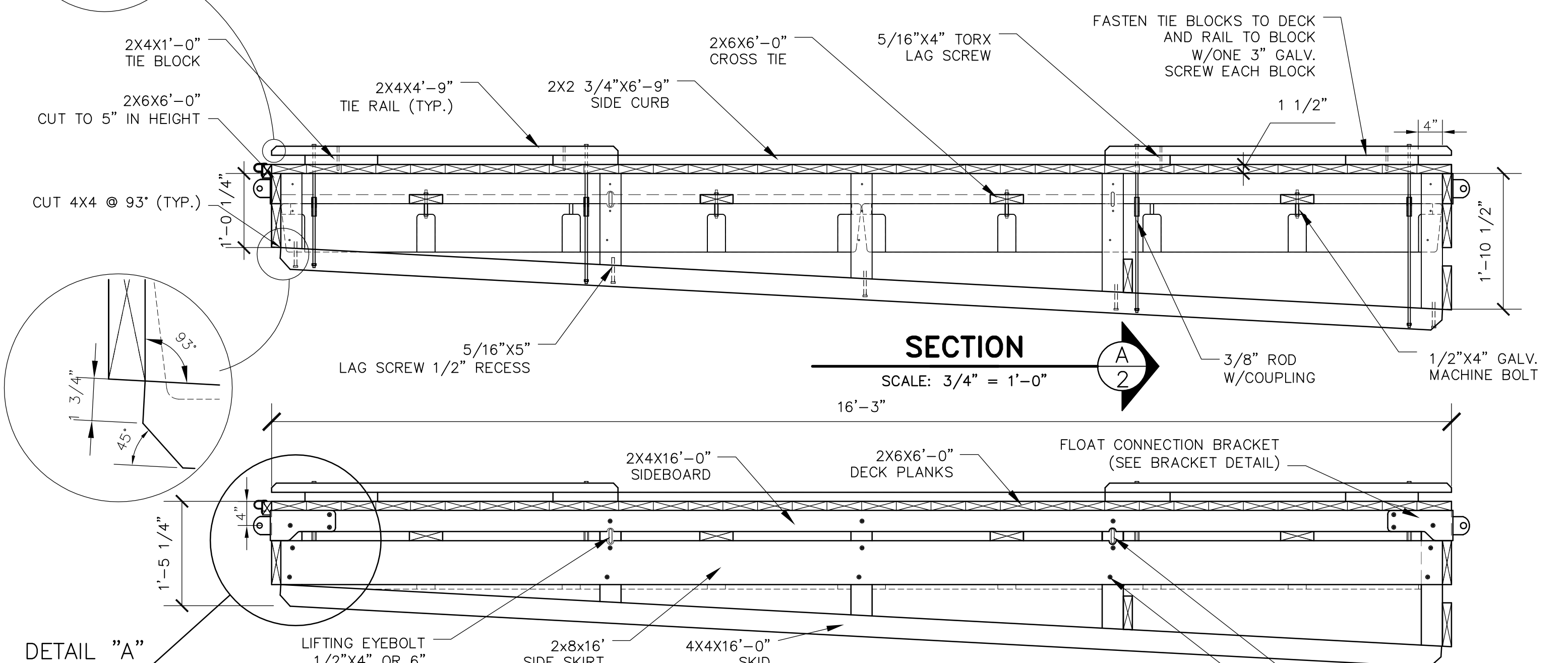
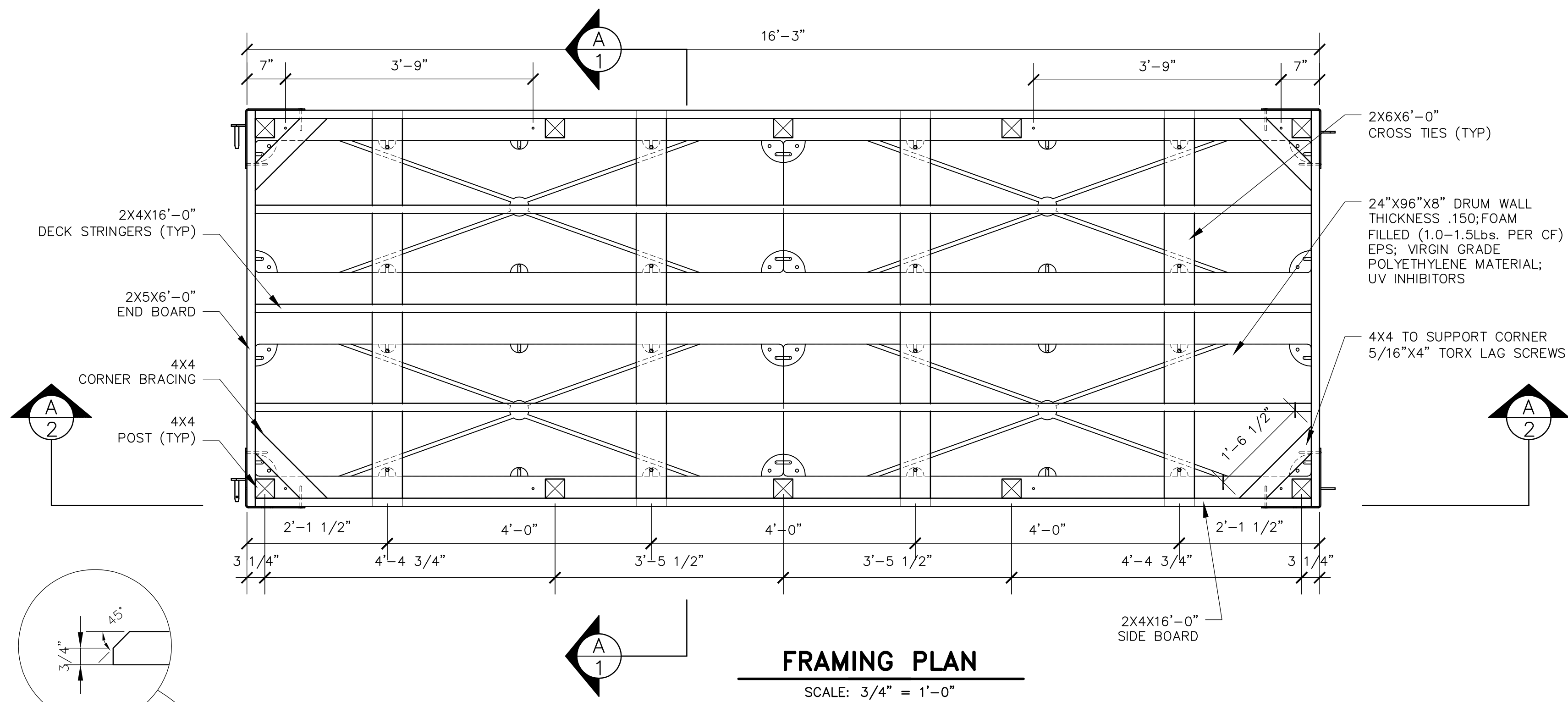


G:\Projects\2007\07008\dwg\BFD 6X16 FS 05_02.DWG
1/3/2013 8:42 AM



TWO 1/2" WASHERS

ONE 1/2" WASHERS

7/8" PLAIN STEEL ROD
5'-10" LONG W/ 7/8"
SAE WASHER EA. END

1/2"x6" DROP FORGED
STEEL SHOULDER THREADED
EYEBOLT W/DOUBLE NUT
(HOT GALVANIZED)

END FACE FLOAT

DRILL 5/16" HOLE FOR
1/4"x2 COTTER PIN
1/2" FROM EACH END
& ONE HOLE 2" IN
FROM ONE END

ALTERNATIVE EYE BOLT SYSTEM

SCALE: 3" = 1'-0"

BFD 6X16 FS 05_02

REVISION #1	ADA COMPLIANCE	BY DLT	AUG. 05
REVISION #2	DRUM FLOATS	BY PTE	AUG. 2012

STATE OF MAINE
DEPARTMENT OF CONSERVATION
BUREAU OF PARKS AND LANDS

DRAWN BY	RBC
CHECKED BY	WCB
DATE	MAR. 94
SCALE	AS SHOWN
PROJECT NO.	--
SHEET 1 OF 5	

STANDARD
6' X 16'
"A" FLOAT

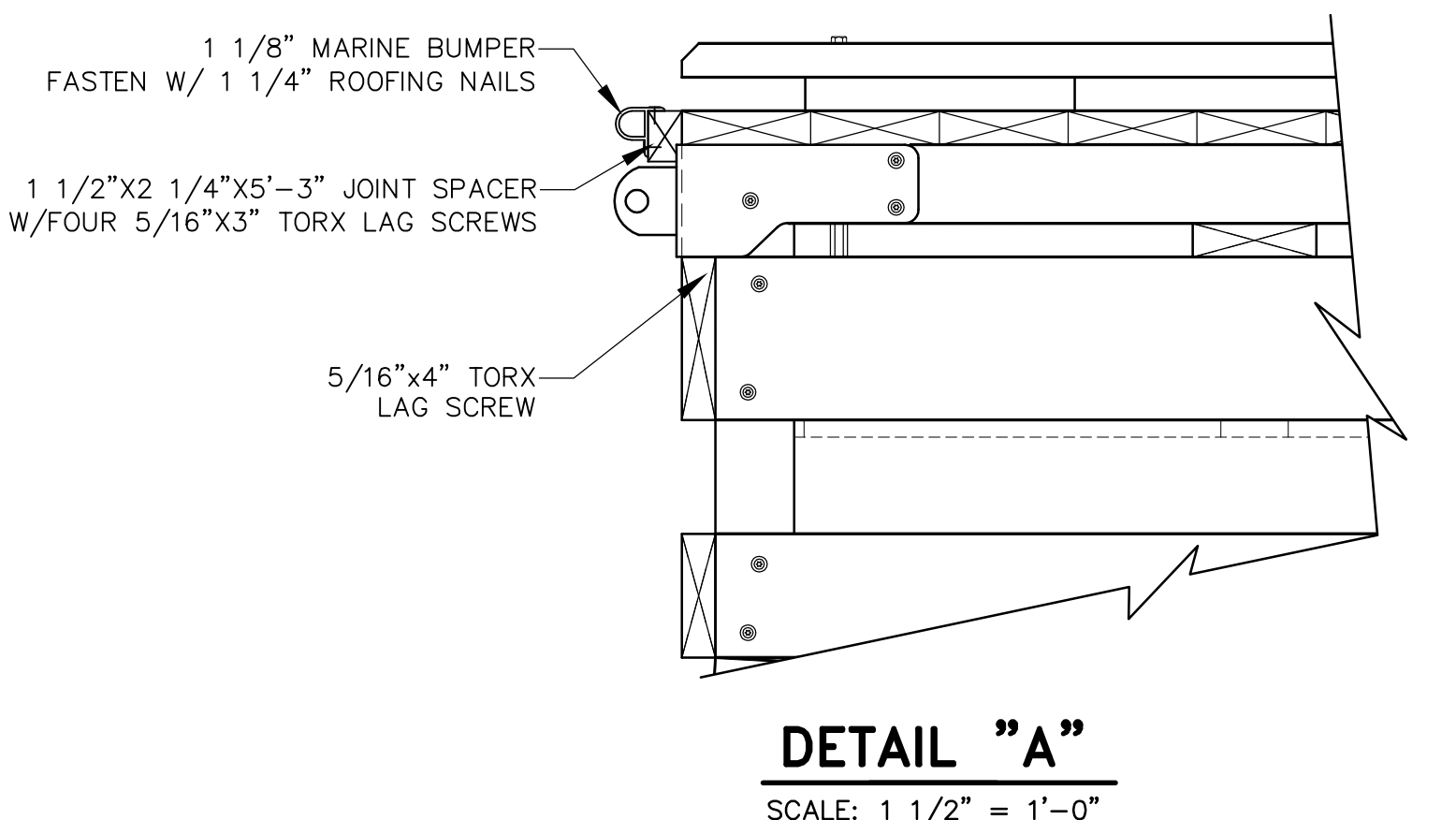
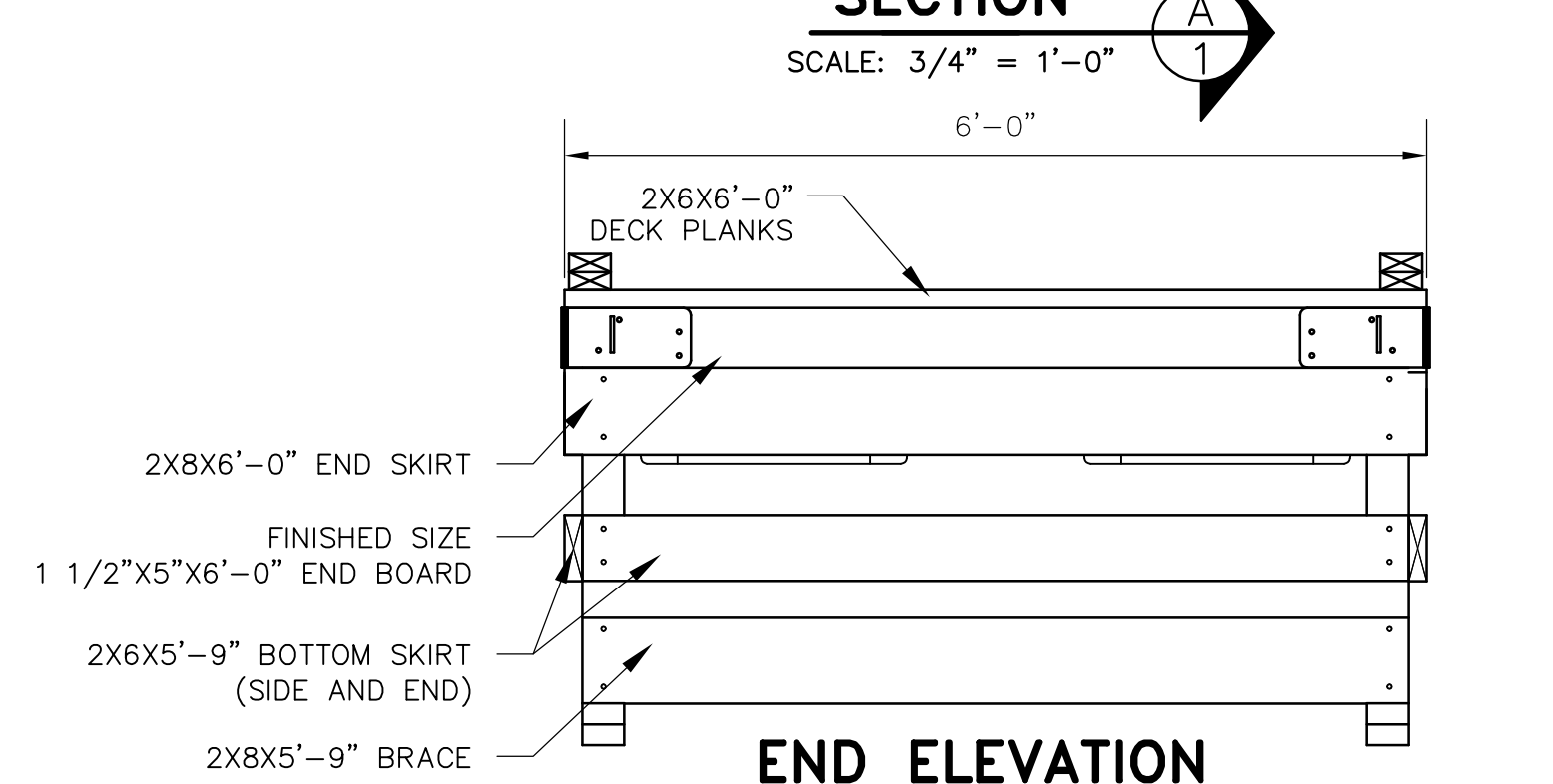
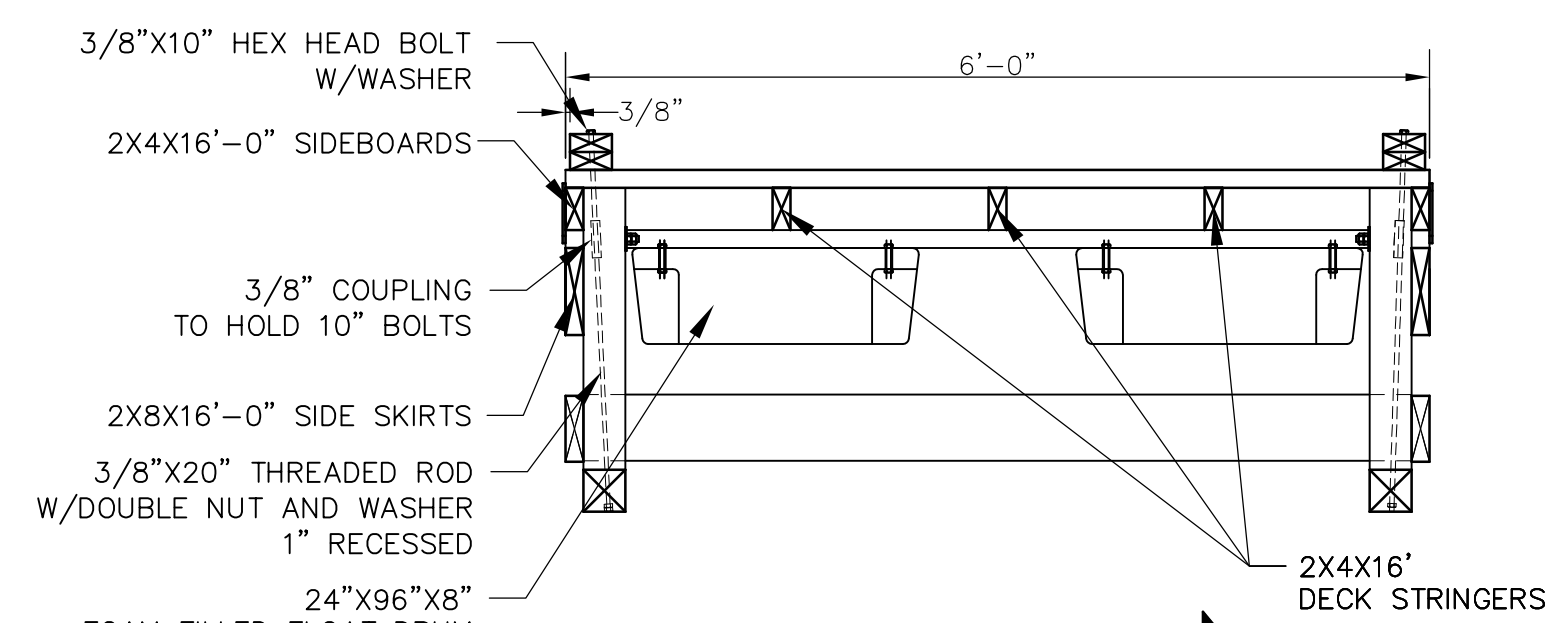
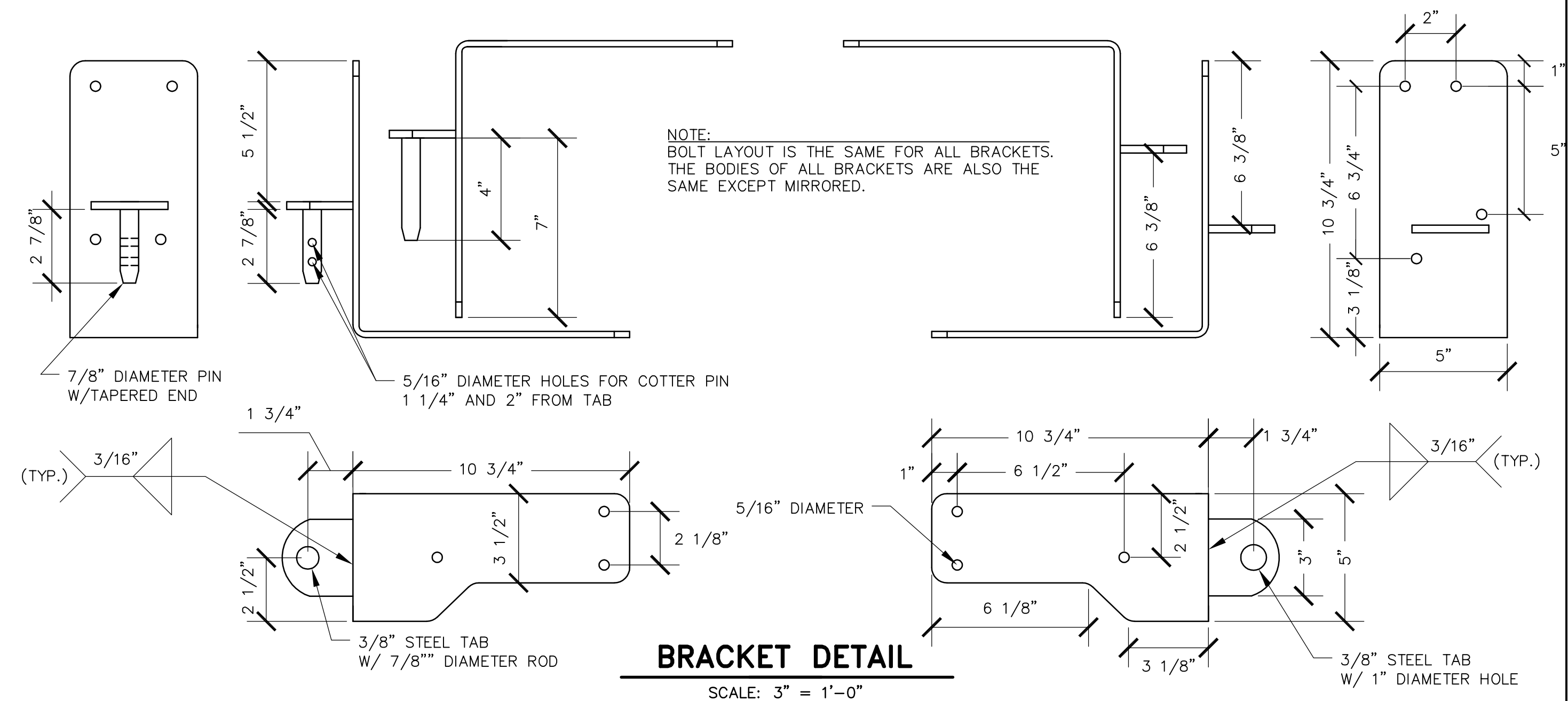
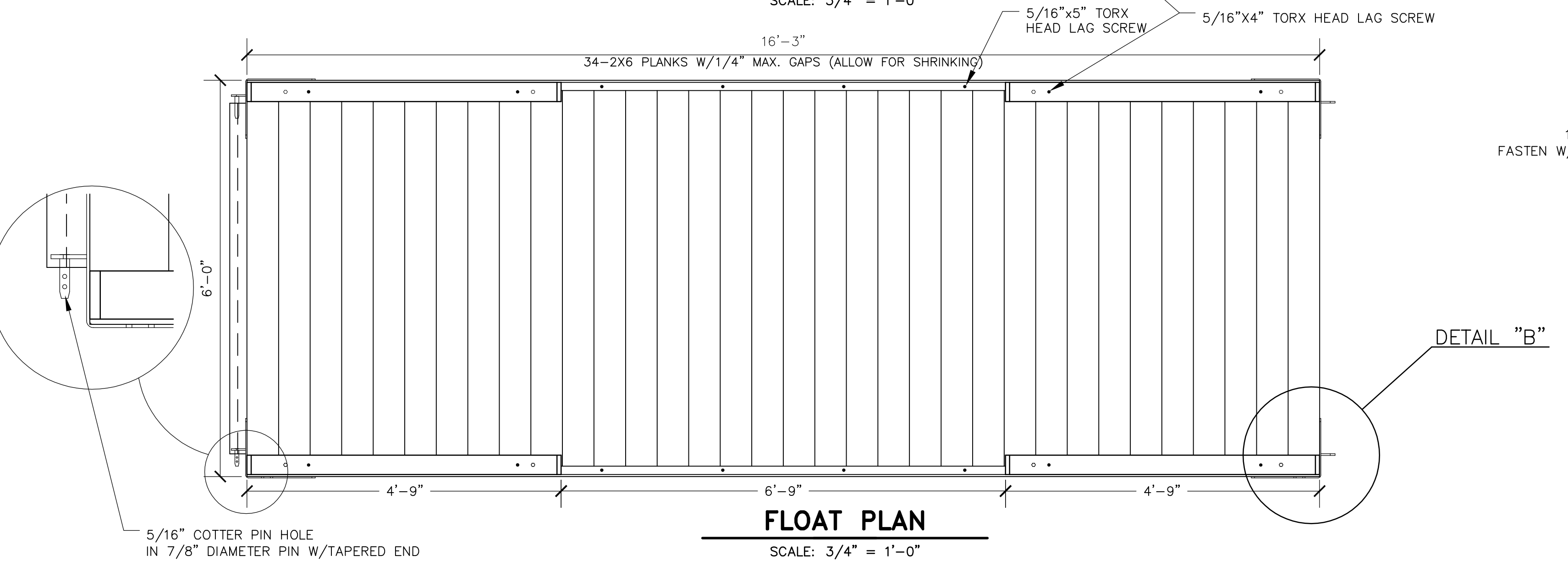
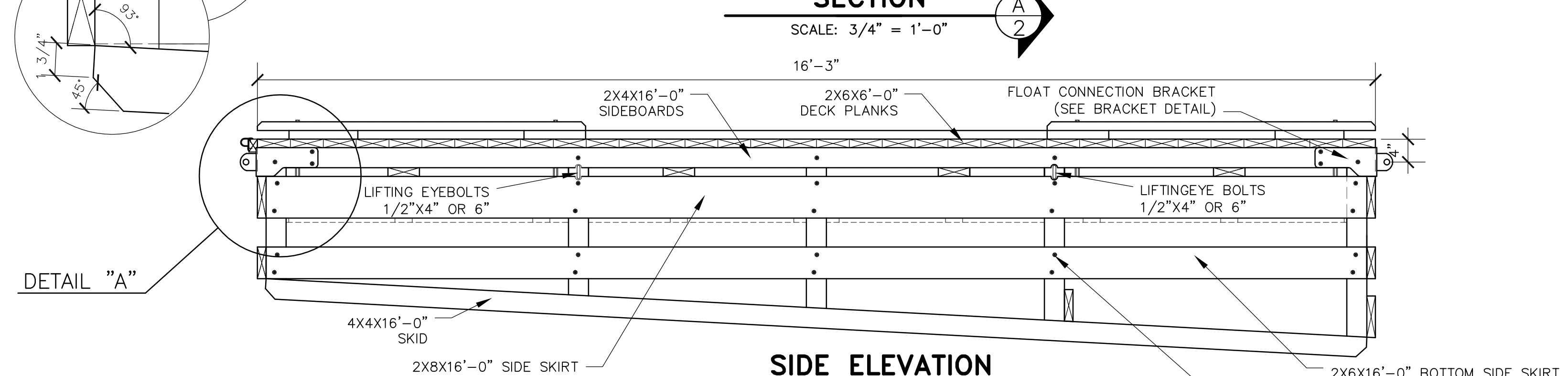
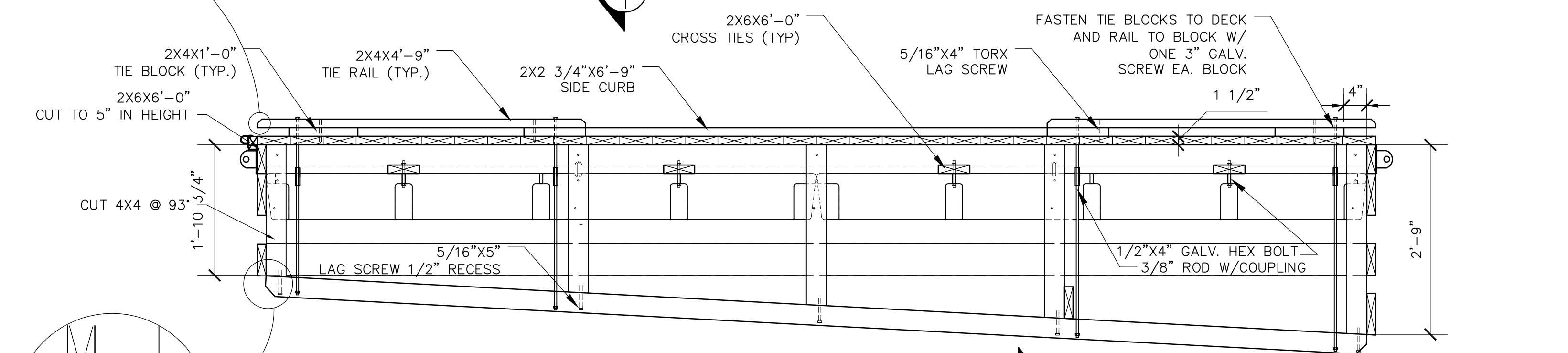
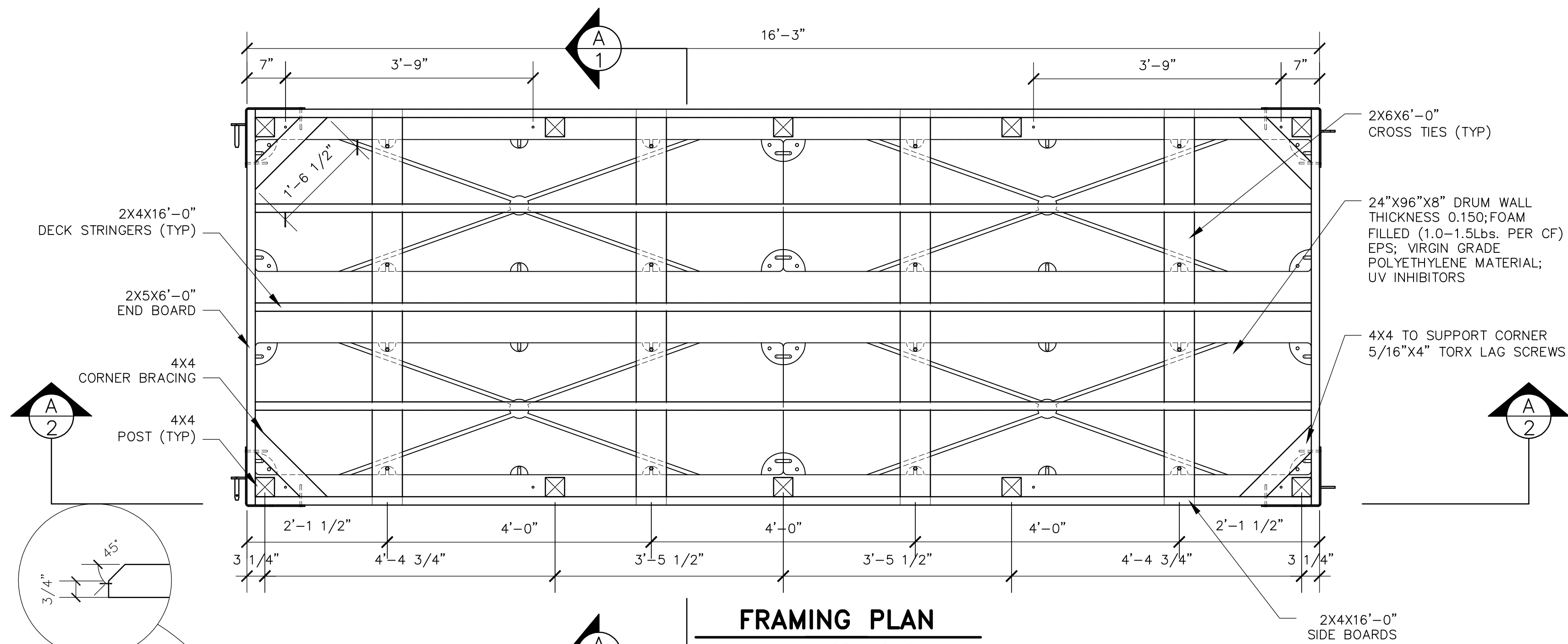
DIRECTOR, PARKS AND LANDS

DATE

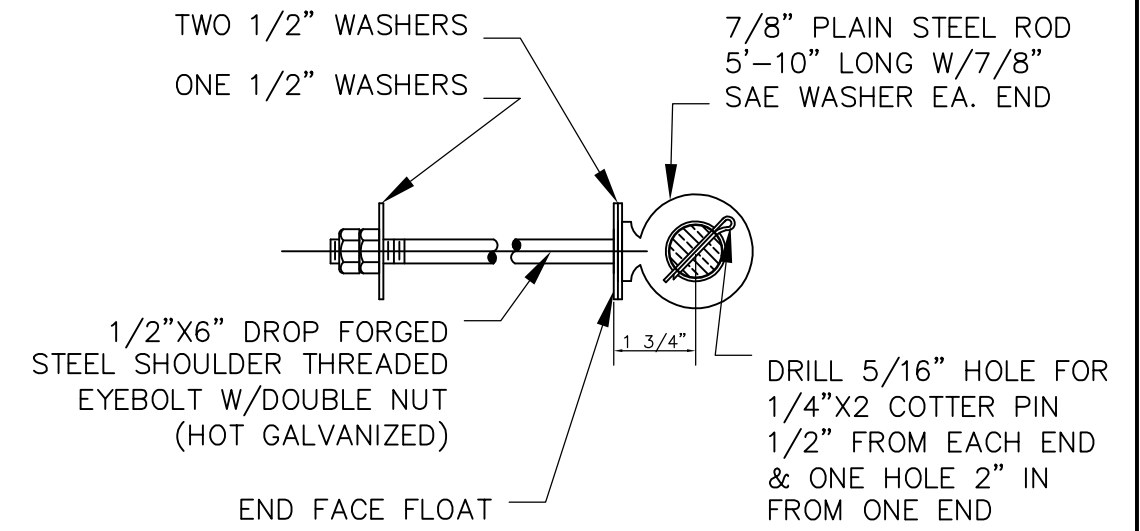
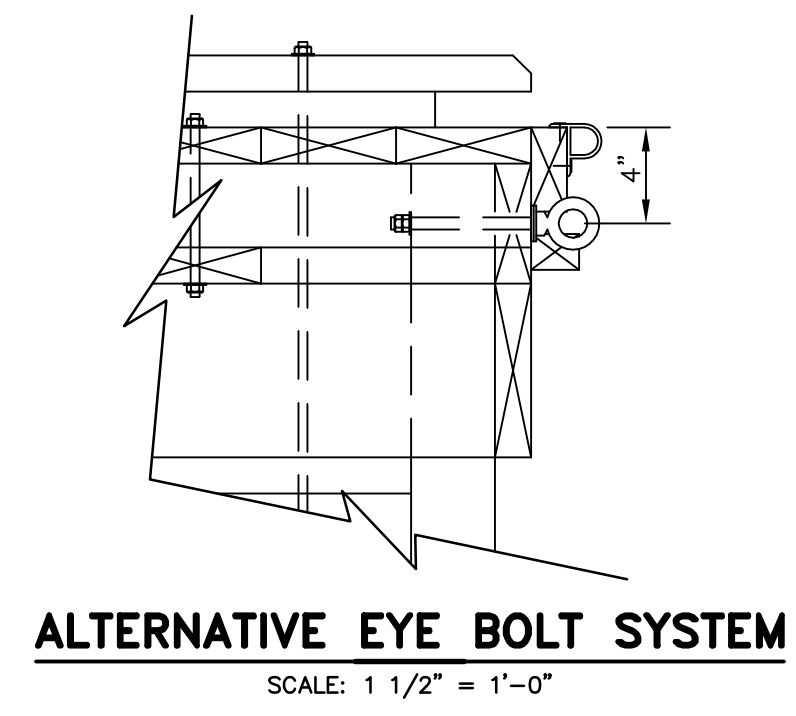
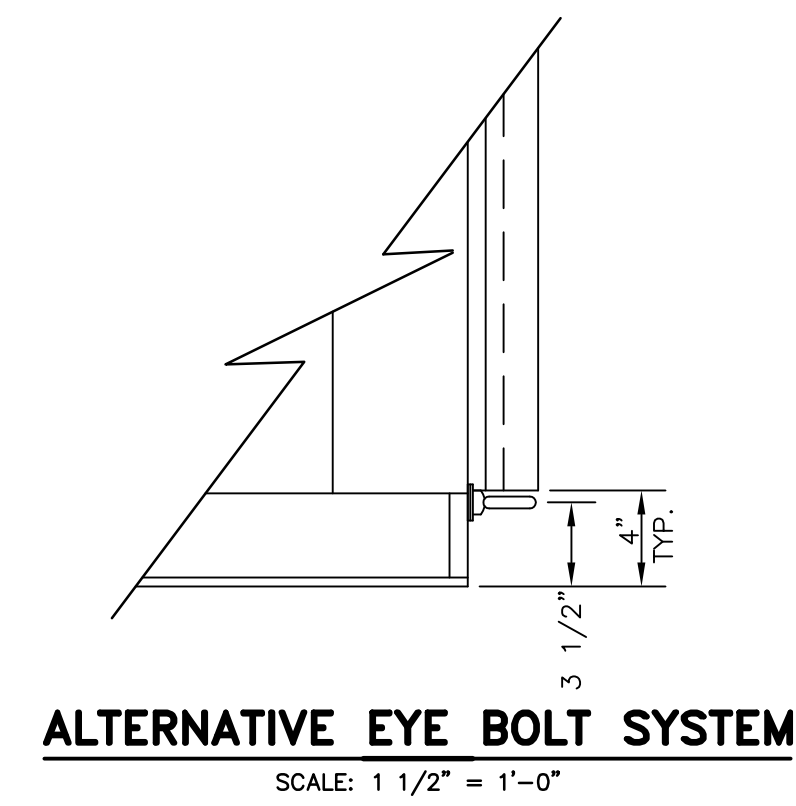
DIRECTOR, B.G.S.

DATE

G:\Projects\2007\07008\dwg\BFD 6X16 FS 06_02.DWG 1/3/2013 8:41 AM

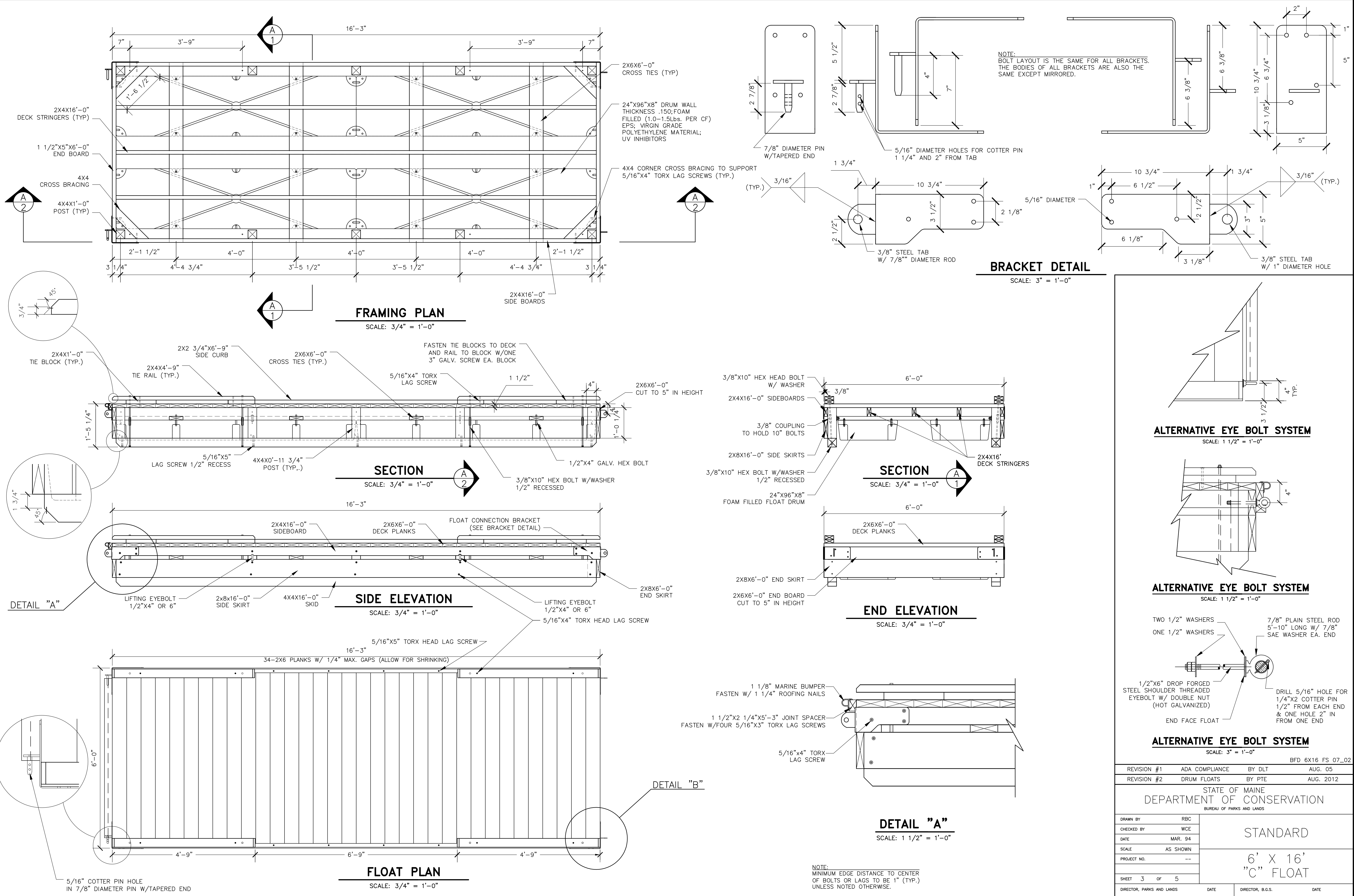


NOTE: MINIMUM EDGE DISTANCE TO CENTER OF BOLT OR LAGS TO BE 1" (TYP.) UNLESS NOTED OTHERWISE.



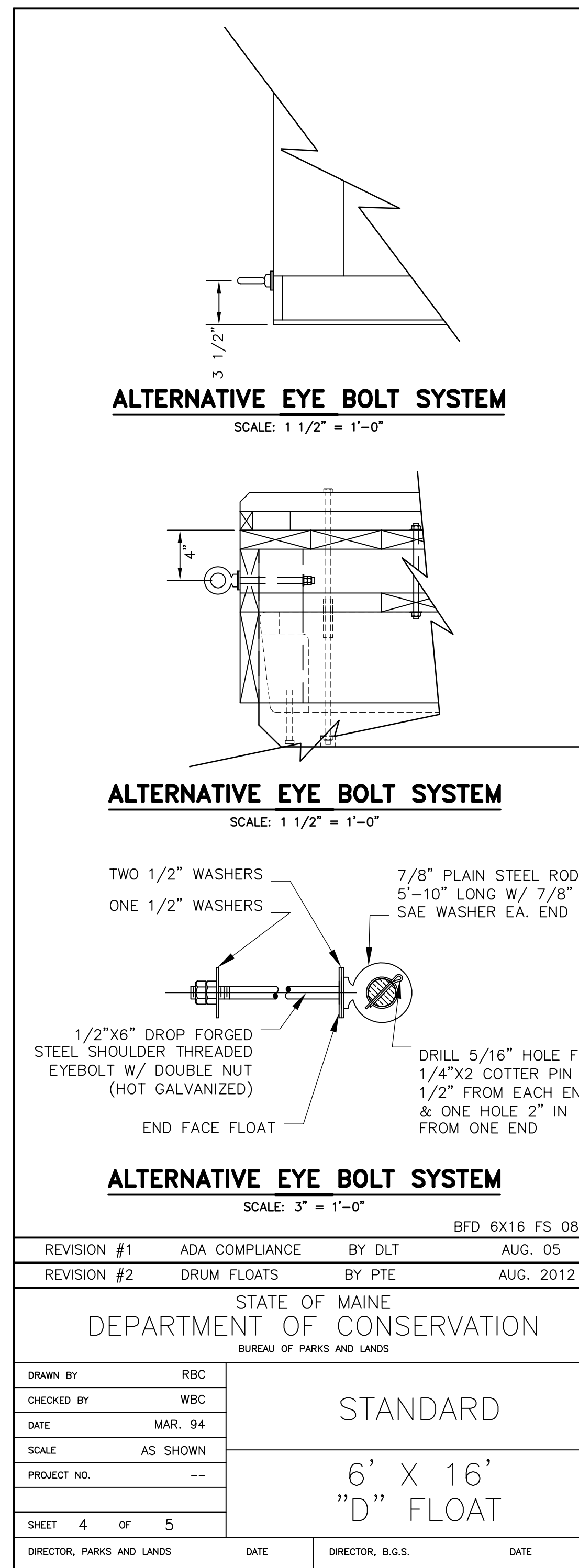
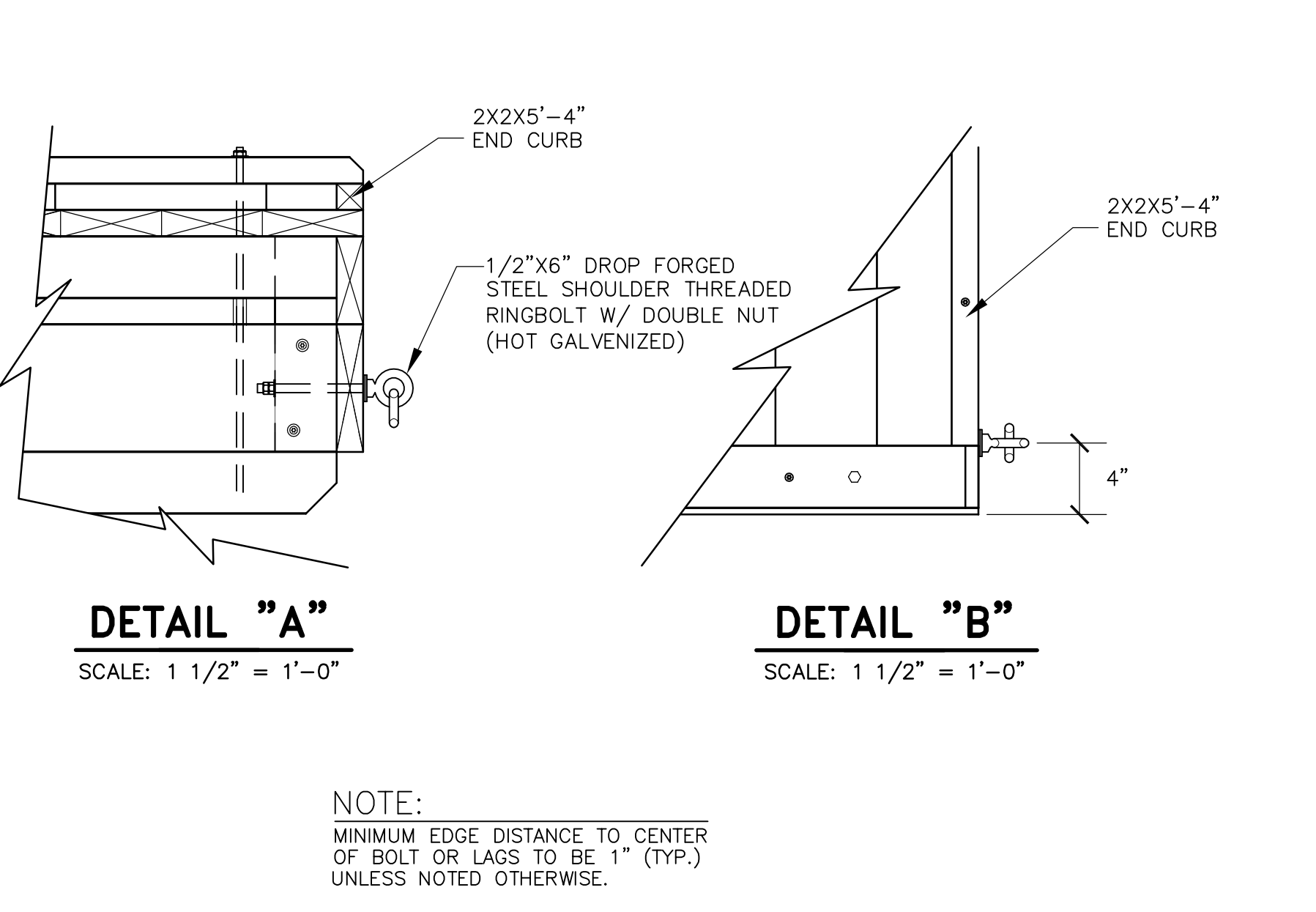
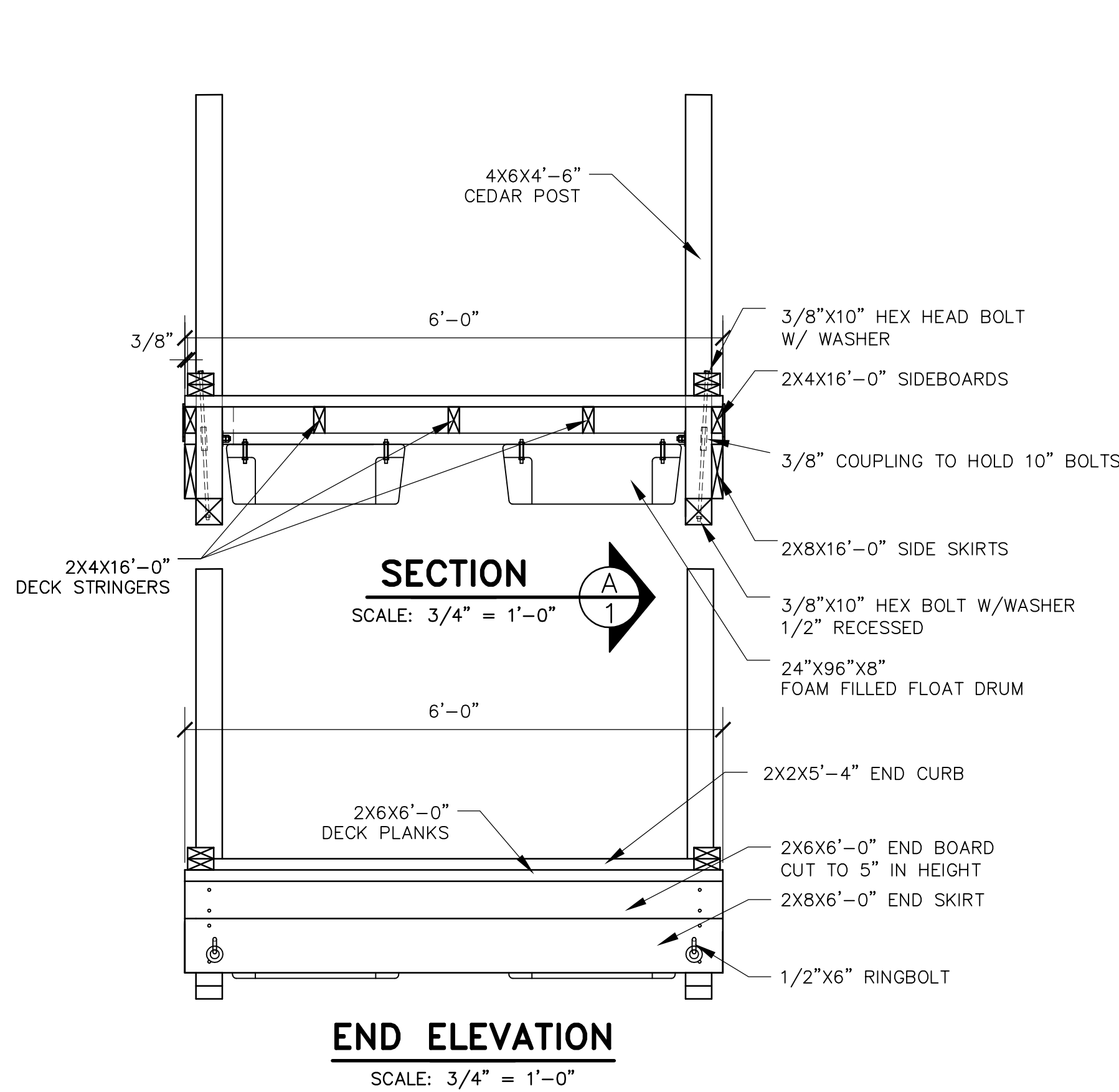
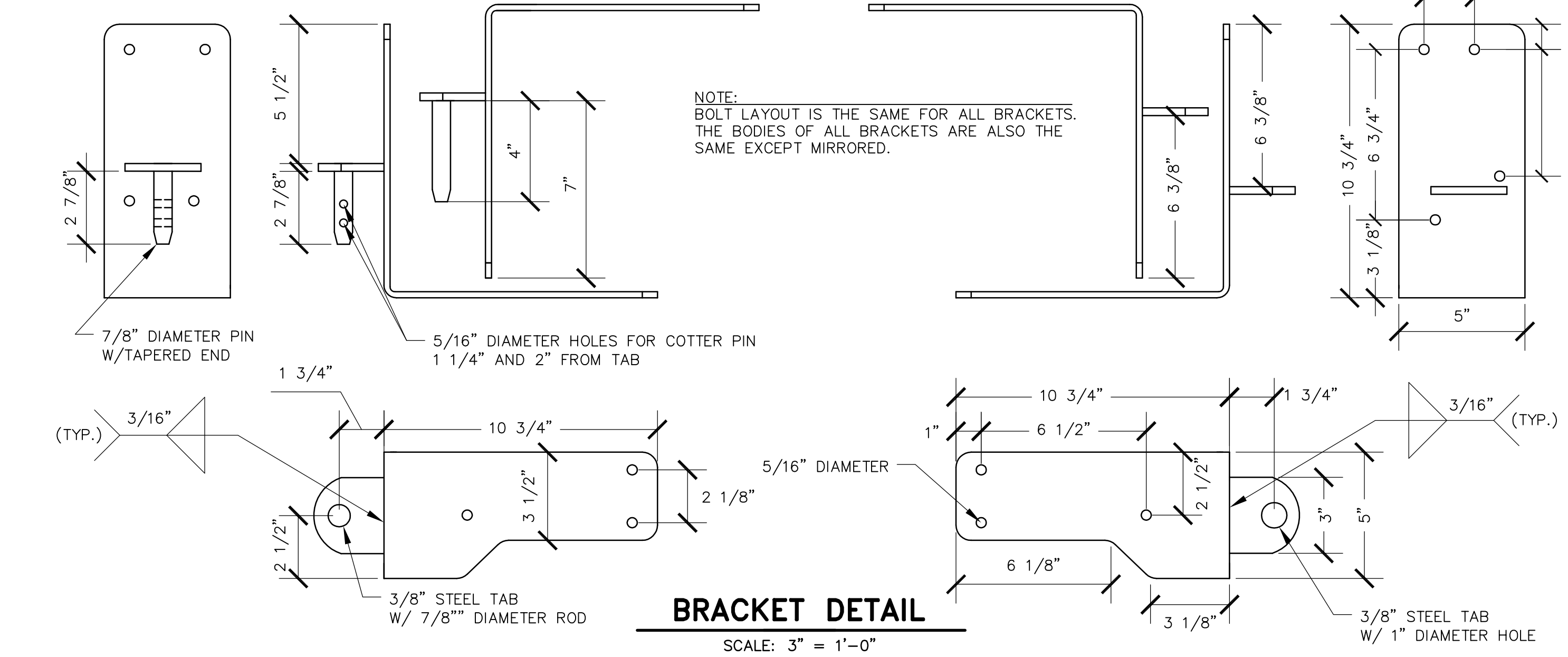
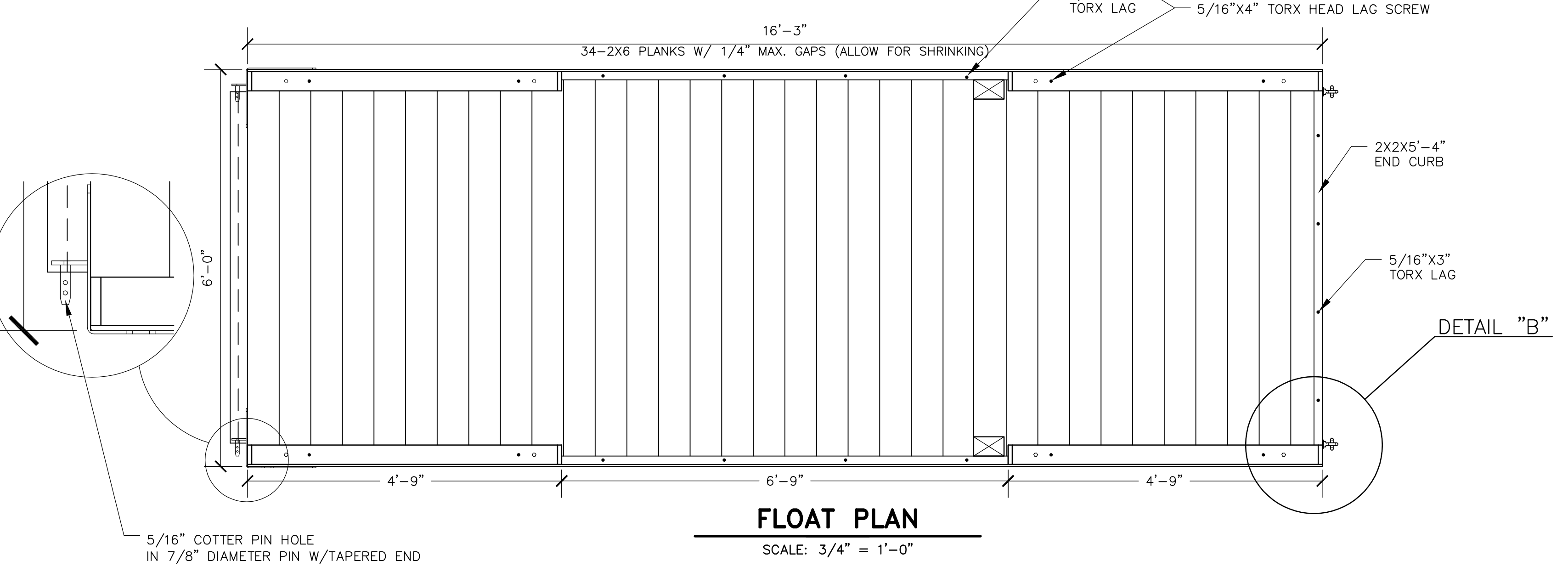
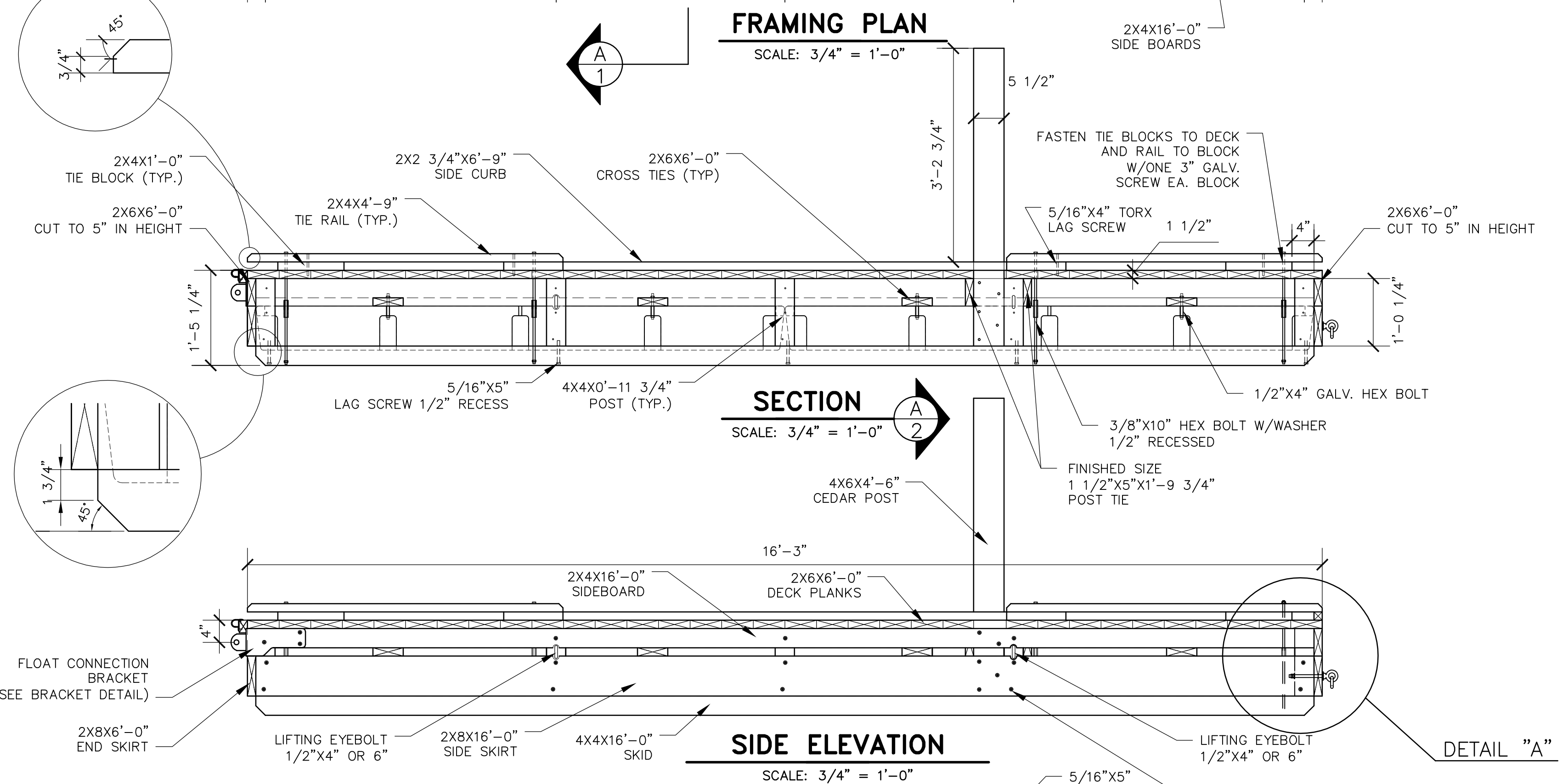
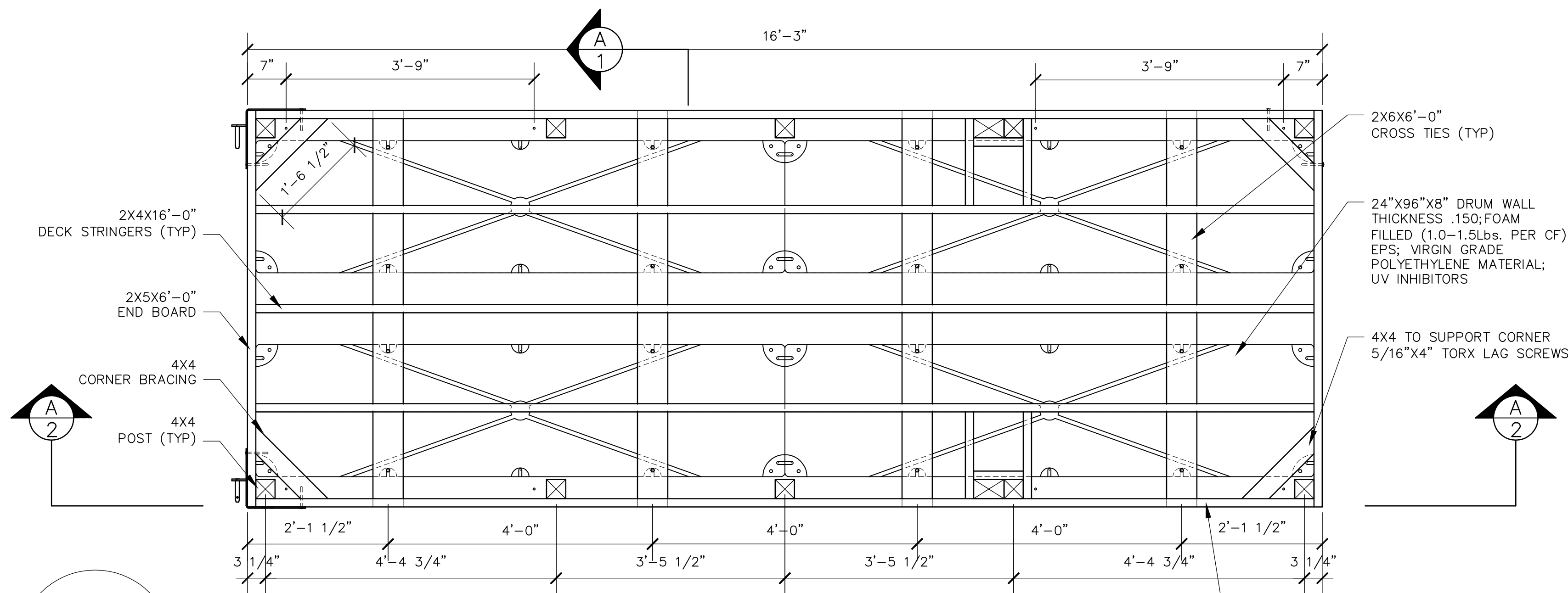
BFD 6X16 FS 06_02			
REVISION #1	ADA COMPLIANCE	BY DLT	AUG. 05
REVISION #2	DRUM FLOATS	BY PTE	AUG. 2012
STATE OF MAINE DEPARTMENT OF CONSERVATION BUREAU OF PARKS AND LANDS			
DRAWN BY	RBC	STANDARD 6' X 16' "B" FLOAT	
CHECKED BY	WCE		
DATE	MAR. 94		
SCALE	AS SHOWN		
PROJECT NO.	--		
SHEET 2 OF 5			
DIRECTOR, PARKS AND LANDS	DATE	DIRECTOR, B.G.S.	DATE

G:\Projects\2007\07008\dwg\BFD 6X16 FS 07_02.dwg 1/3/2013 8:42 AM



BFD 6X16 FS 07_02				
REVISION #1	ADA COMPLIANCE	BY DLT	AUG. 05	
REVISION #2	DRUM FLOATS	BY PTE	AUG. 2012	
STATE OF MAINE DEPARTMENT OF CONSERVATION BUREAU OF PARKS AND LANDS				
DRAWN BY	RBC	STANDARD 6' X 16' "C" FLOAT		
CHECKED BY	WCE			
DATE	MAR. 94			
SCALE	AS SHOWN			
PROJECT NO.	--			
SHEET 3 OF 5				
DIRECTOR, PARKS AND LANDS		DATE	DIRECTOR, B.G.S.	DATE

1/3/2013 8:43 AM G:\Projects\2007\07008\dwg\BFD 6X16 FS 08.dwg

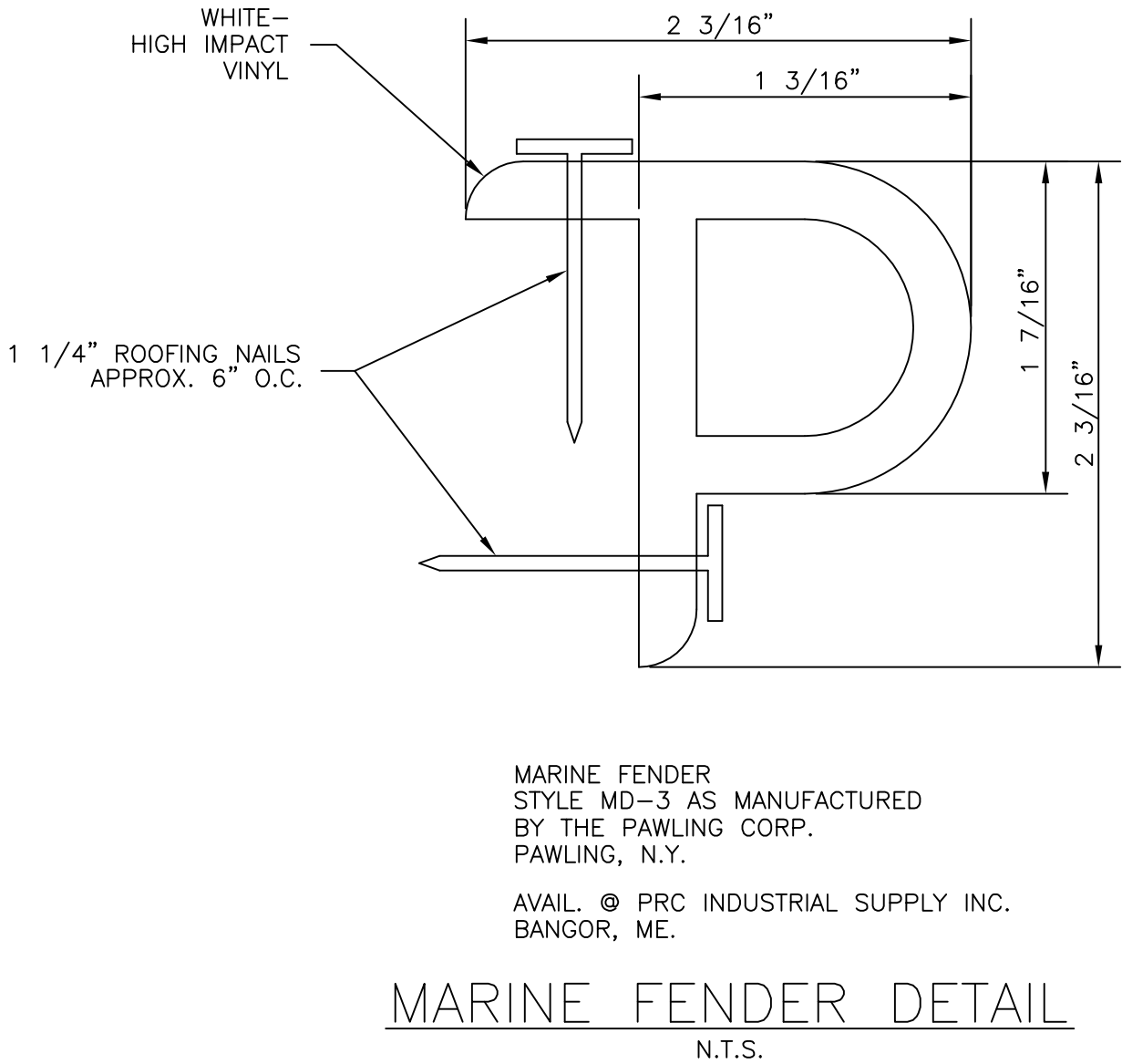


BFD 6X16 FS 08			
REVISION #1	ADA COMPLIANCE	BY DLT	AUG. 05
REVISION #2	DRUM FLOATS	BY PTE	AUG. 2012
STATE OF MAINE DEPARTMENT OF CONSERVATION BUREAU OF PARKS AND LANDS			
DRAWN BY	RBC	STANDARD 6' X 16' "D" FLOAT	
CHECKED BY	WBC		
DATE	MAR. 94		
SCALE	AS SHOWN		
PROJECT NO.	--		
SHEET 4 OF 5			
DIRECTOR, PARKS AND LANDS	DATE	DIRECTOR, B.G.S.	DATE

(b) LUMBER INFORMATION								
PART	SIZE	NO.	CUT FROM	"A" NO. PCS.	"B" NO. PCS.	"C" NO. PCS.	"D" NO. PCS.	6'X8' RAMP
<u>COMMON FLOAT LUMBER INFORMATION</u>								
(b) SKIDS (CHAMFERED ENDS)	4X4X16'-0"	2	4X4X16'	2	2	2	2	-
SIDE SKIRTS	2X8X16'-0"	2	2X8X16'	2	2	2	2	-
END SKIRTS	2X8X6'-0"	2	2X8X12'	1	1	1	1	-
POSTS	4X4X0'-11 3/4"	10	4X4X10'	-	-	1	1	-
END BOARDS	(a) 1 1/2"X5"X6'-0"	2	2X6X12'	1	1	1	1	-
CROSS TIES	2X6X6'-0"	4	2X6X12'	2	2	2	2	-
SIDE BOARDS	2X4X16'-0"	2	2X4X16'	2	2	2	2	-
DECK STRINGERS	2X4X16'-0"	3	2X4X16'	3	3	3	3	-
CORNER BRACE (cut @ 45°)	4X4X1'-6 1/2"	4	4X4X8'	1	1	1	1	-
TIE BLOCKS	2X4X1'-0"	8	2X4X8'	1	1	1	1	-
TIE RAILS	2X4X4'-9"	4	2X4X10'	2	2	2	2	-
DECK PLANKS	2X6X6'-0"	34	2X6X12'	17	17	17	17	-
CURB	(a) 1 1/2"X2 3/4"X6'-9"	2	2X6X12'	1/2	1/2	1/2	-	-
JOINT SPACER	(a) 1 1/2"X2 1/4"X5'-3"	1	2x4x8"	1	1	1	1	-
<u>ADDITIONAL "A" FLOAT LUMBER</u>								
POSTS	4X4X1'-0 7/16" TO 1'-10 1/2"	10	4x4x8'	2	-	-	-	-
BRACE	2X6X5'-9"	1	2x6x12'	1/2	-	-	-	-
BRACE (END)	2X8X5'-9"	1	2x8x8'	1	-	-	-	-
<u>ADDITIONAL "B" FLOAT LUMBER</u>								
POSTS	4x4x1'-11" TO 2'-9"	10	4x4x12'	-	2	-	-	-
BOTTOM SIDE SKIRTS	2x6x16'-0"	2	2x6x16'	-	2	-	-	-
BOTTOM END SKIRT	2x6x5'-9"	1	2x6x12'	-	1/2	-	-	-
BRACE (SIDE)	2x6x5'-9"	1	2x6x12'	-	1/2	-	-	-
BRACE (END)	2x8x5'-9"	1	2x8x8'	-	1	-	-	-
<u>ADDITIONAL "D" FLOAT LUMBER</u>								
POSTS (CEDAR)	4x6x4'-6"	2	4x6x10'	-	-	-	1	-
POST TIES	(a) 1 1/2"x5"x1'-9 3/4"	4	2x6x12'	-	-	-	1	-
CURB (SIDE)	(a) 1 1/2"X2 3/4"X6'-9"	2	2x6x8'	-	-	-	1	-
CURB (END)	(a) 1 1/2"X1 1/2"X5'-4"	1	2x4x8'	-	-	-	1	-
<u>6X8 RAMP</u>								
SKIDS	2x4x8'-0"	2	2x4x8'	-	-	-	-	2
DECK SUPPORTS	2x6x8'-0"	4	2x6x8'	-	-	-	-	4
END BRACE (INBOARD)	(a) 2 1/2"x3 1/2"x5'-9"	1	4x4x12'	-	-	-	-	1
END BRACE (OUTBOARD)	4x4x5'-9"	1	<div>↑</div>	-	-	-	-	<div>↑</div>
TIE RAILS	2x4x8'-0"	2	2x4x8'	-	-	-	-	2
TIE BLOCKS	2x4x1'-0"	8	2x4x8'	-	-	-	-	1
DECK PLANKS	2x6x6'-0"	17	2x6x12'	-	-	-	-	9
(a) FINISHED SIZE LUMBER								
(b) ALL LUMBER KILN DRIED, GRADE #1 WITH 0.14 PCF DISPERSED (MICRONIZED) COPPER AZOLE (µCA-C) PRESSURE TREATMENT								

HARDWARE ORDER/MISC.								
PART	NO. FLOATS REQ'D	TYPE CONNECTION						
					"A" FLOAT NO. PCS.	"B" FLOAT NO. PCS.	"C" FLOAT NO. PCS. TOTAL PCS.	"D" FLOAT NO. PCS. TOTAL PCS.
BOLT, HEX GALV. 3/8"x10"	TIE RAIL TO SKID		10	8	16		16	-
BOLT, MACHINE GALV. 1/2"x4"	FLOAT DRUM SUPPORT		16	16	16		16	-
THREADED ROD, GALV. 3/8"	TIE RAIL TO SKID		100 inches	202 inches	-		-	-
1/2"x4" GALV. SHOULDER EYEBOLT	LIFTING BOLTS		4	4	4		4	-
1/2"x6" GALV. SHOULDER EYEBOLT	RAMP		-	-	-		-	4
1/2"x6" GALV. SHOULDER RINGBOLT	MOORING CONNECTOR		-	-	-		2	-
NUTS, 1/2" GALV.	DRUM SUPPORT, LIFTING BOLTS		40	40	40		40	-
NUTS, 3/8" GALV. COUPLING LONG	TIE RAIL TO SKID		8	8	8		8	-
NUTS, 3/8" GALV.	TIE RAIL TO SKID		12	16	-		-	-
WASHERS, 3/8" GALV.	TIE RAIL TO SKID		16	16	16		16	-
WASHERS, 1/2" GALV.	LIFTING BOLTS		40	40	40		40	12
WASHER, 7/8" GALV.	FLOAT CONNECTOR		2	2	2		2	-
FLOAT CONNECTION BRACKET	FLOAT TO ABUTMENT OR FLOAT		4	4	4		2	-
COTTER PIN, 1/4"x2 1/2" ZINC	FLOAT CONNECTION BRACKET		2	2	2		2	-
LAG, TORX GALV. 5/16"x3"	JOINT SPACER, END CURB		8	8	8		12	-
LAG, TORX GALV. 5/16"x4"	SKIRTS, BOARDS, TIE RAILS & POSTS		78	106	70		72	-
LAG, TORX GALV. 5/16"x5"	CURB & SKIDS		18	18	18		18	-
NAILS, 12D GALV.	TOE NAILING		4 lbs.	4 lbs.	4 lbs.		4 lbs.	-
NAILS, 16D GALV.	DECKING & FASTENING 2x'S		6 lbs.	6 lbs.	6 lbs.		6 lbs.	4 lbs.
NAILS, GALV. ROOFING 1 1/4"	MARINE FENDER		1 lbs.	1 lbs.	1 lbs.		1 lbs.	-
3" GALV. TORX SCREWS	TIE BLOCKS & TIE RAILS TO DECK		3 lbs.	3 lbs.	3 lbs.		3 lbs.	2 lbs.
4" GALV. TORX SCREWS	DECK PLANKS TO END BRACES		-	-	-		-	1 lb.
MARINE FENDER (SEE DETAIL BELOW)	5'-3" LONG		1	1	1		1	1
FLOAT DRUM, 24"x96"x8" (a)	FLOAT DRUM		4	4	4		4	-
(a) FLOAT DRUM-MEET CORPS OF ENGINEER SPECS; WALL THICKNESS-0.150; ONE PIECE ROTATIONAL MOLDED CONSTRUCTION; FOAM FILLED-1.0 TO 1.5 PCF EPS; VIRGIN POLYETHYLENE; UV INHIBITORS; MOLDED IN MOUNTING FLANGES								
NOTE: THE ALTERNATIVE BRACKET SYSTEM USING EYEBOLTS IS NOT INCLUDED IN THE LIST ABOVE.								

LUMBER/MISC. ORDER							
NO. FLOATS REQ'D							
MATERIAL	"A" NO. PCS.	"B" NO. PCS.	"C" NO. PCS./FLOAT TOTAL PCS.		"D" NO. PCS.	6'X8' RAMP	TOTAL PCS.
2x4x8'	2	2	2		3	5	
2x4x10'	2	2	2		2	-	
2x4x16'	5	5	5		5	-	
2x6x8'	-	-	-		1	4	
2x6x12'	21	22	21		21	9	
2x6x16'	-	2	-		-	-	
2x8x8'	1	1	-		-	-	
2x8x12'	1	1	1		1	-	
2x8x16'	2	2	2		2	-	
4x4x8'	3	1	1		1	-	
4x4x10'	-	-	1		1	-	
4x4x12'	-	2	-		-	1	
4x4x16'	2	2	2		2	-	
4x6x10' (CEDAR)	-	-	-		1	-	



NOTE:
ALL SCREWS (TORX HEAD OR OTHER) ARE TO BE TREATED WITH CLIMATEK™ (BY GRK FASTENERS). ALL OTHER HARDWARE SHALL BE HOT DIPPED GALVANIZED OR EQUAL, COMPATIBLE FOR µCA-C (OR CCA) LUMBER IN FRESHWATER (OR MARINE) APPLICATIONS.

BFD 6X16 FS 09_02			
REVISION #1	ADA COMPLIANCE	BY DLT	AUG. 05
REVISION #2	DRUM FLOATS	BY PTE	AUG. 2012
STATE OF MAINE DEPARTMENT OF CONSERVATION BUREAU OF PARKS AND LANDS			
DRAWN BY	RBC	STANDARD 6' X 16' FLOATS AND 6' X 8' RAMP LUMBER & HARDWARE LISTS	
CHECKED BY	WCE		
DATE	MAR. 94		
SCALE	AS SHOWN		
PROJECT NO.	--		
SHEET 5 OF 5			
DIRECTOR, PARKS AND LANDS	DATE	DIRECTOR, B.G.S.	DATE